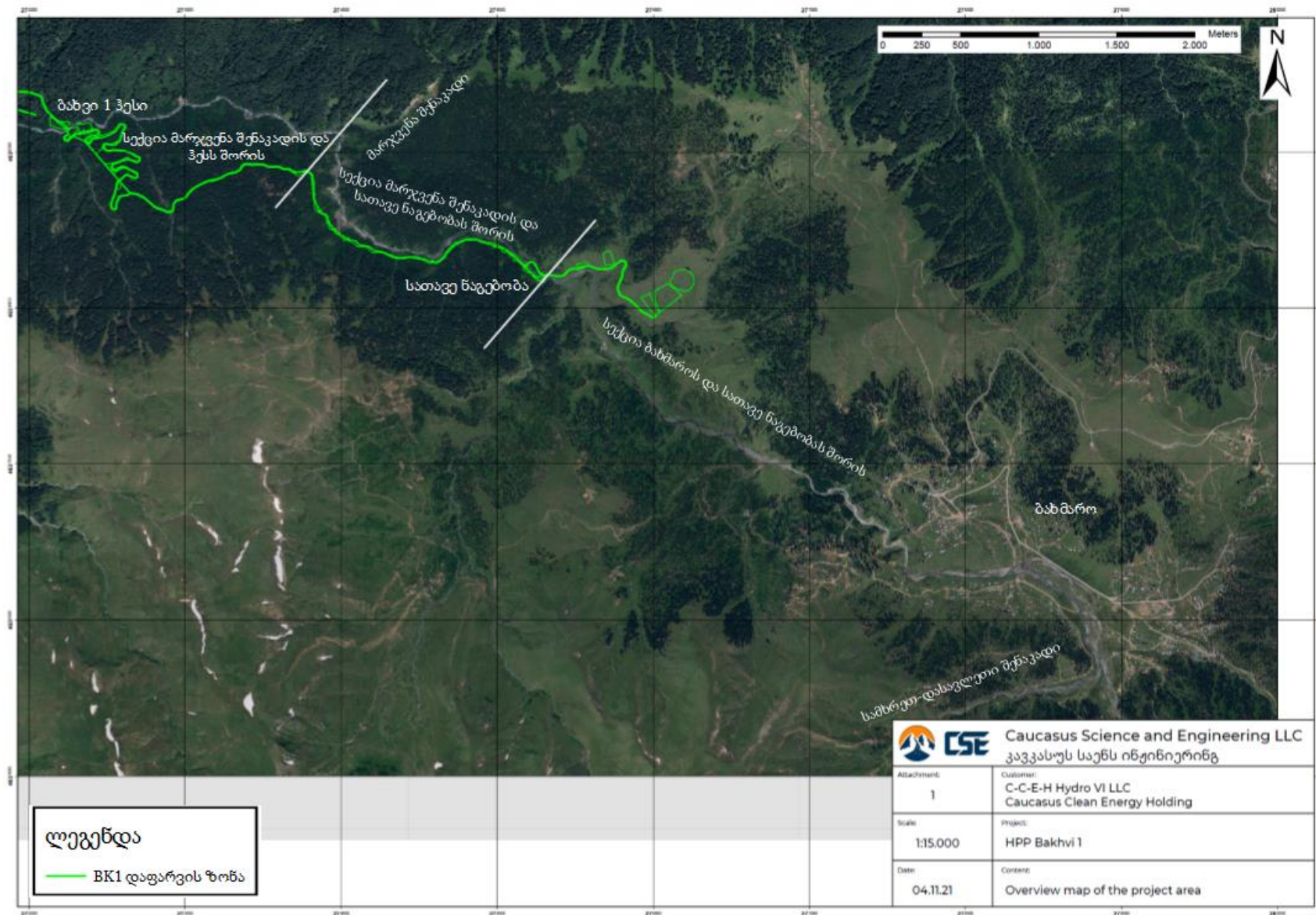
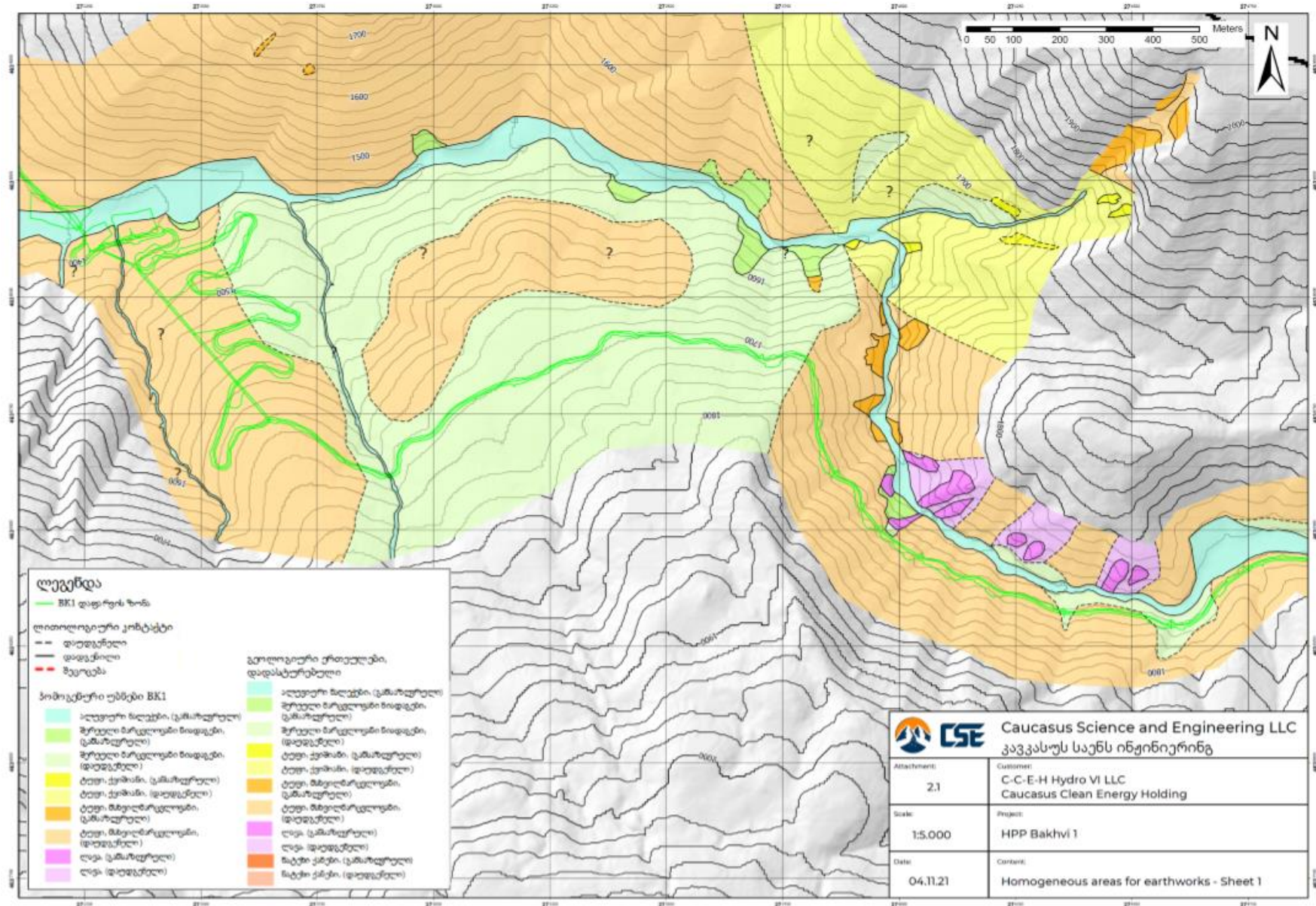


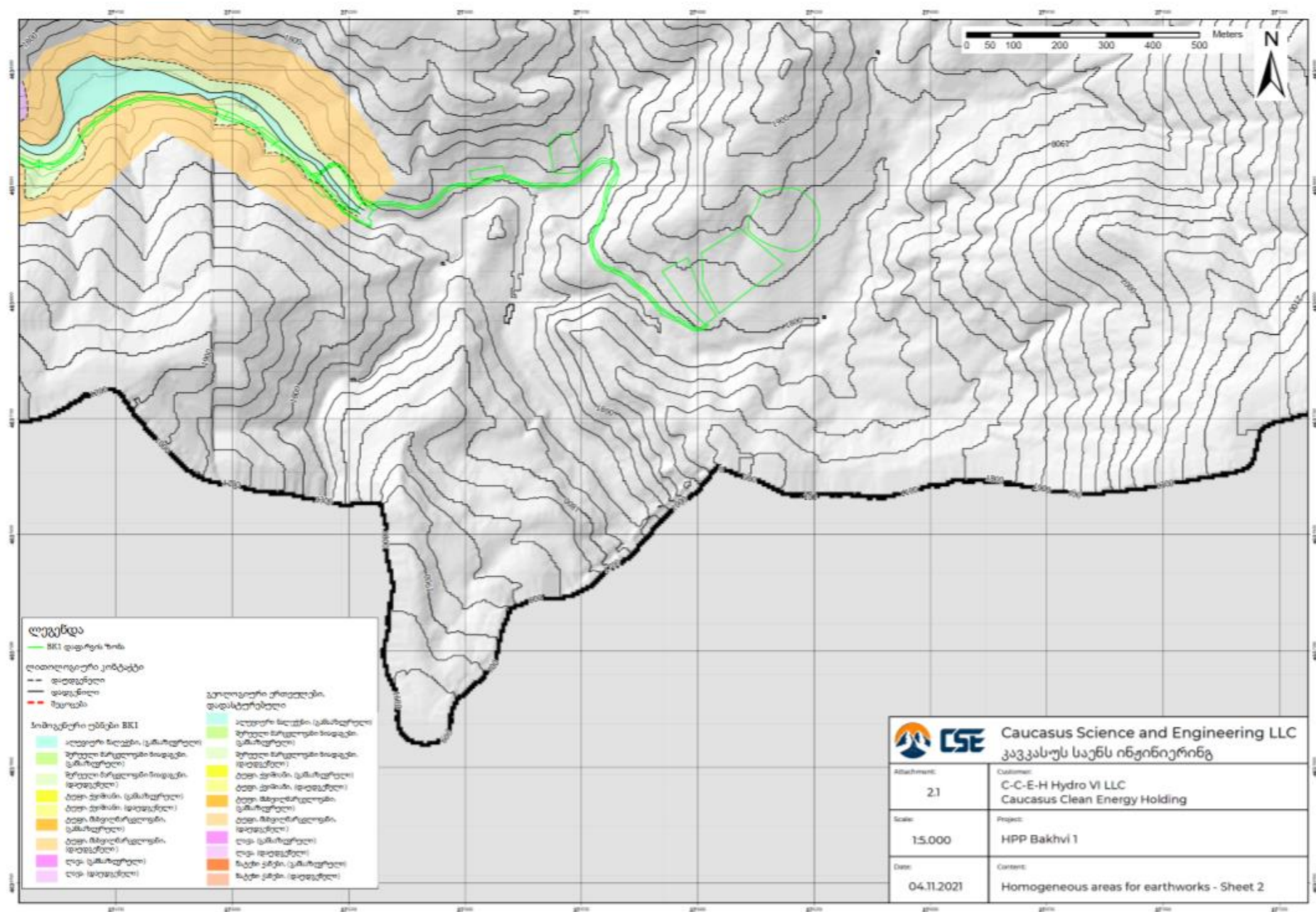
საკვლევი ტერიტორიის ზოგადი სქემა





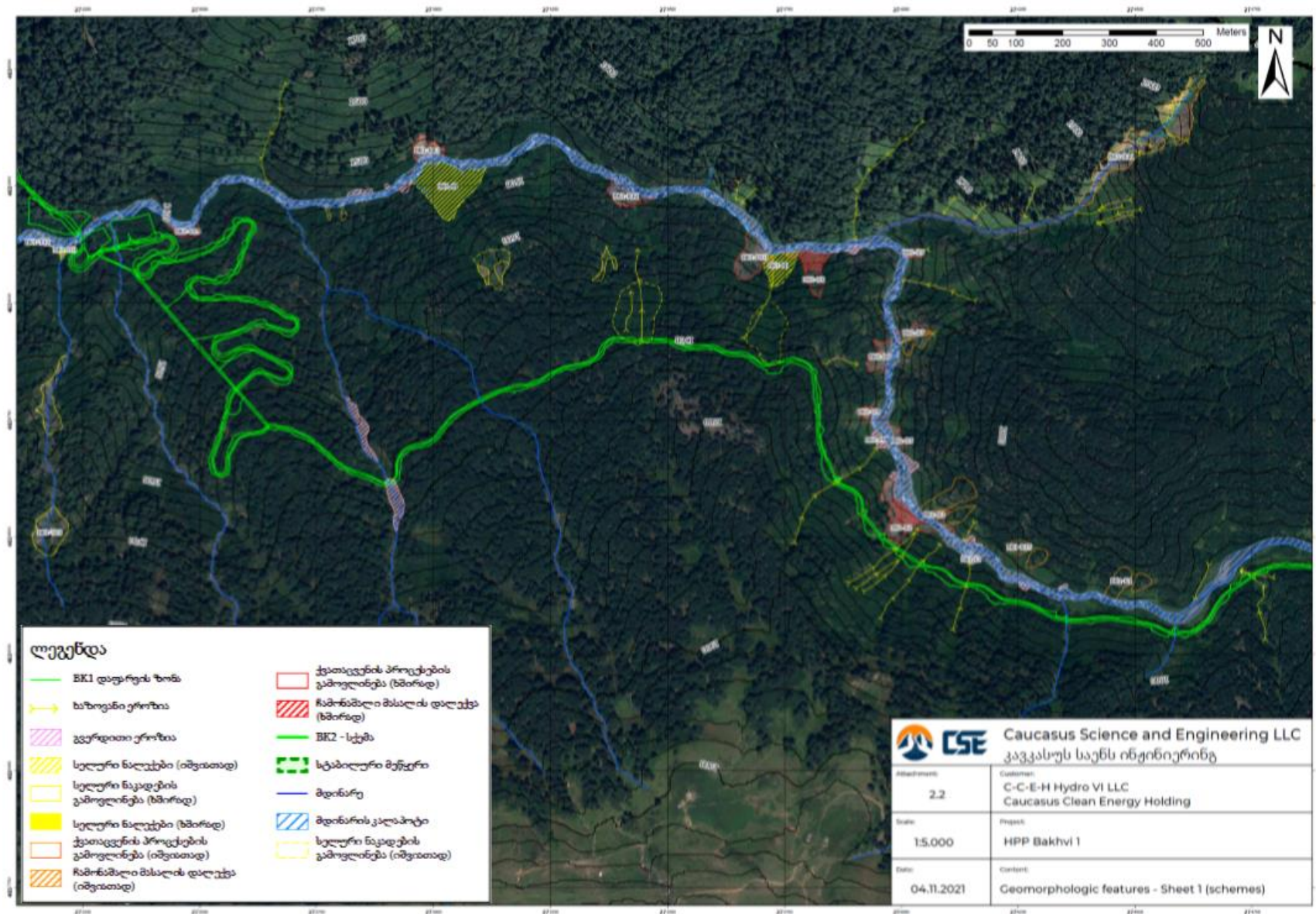
ჰომოგენური უბნები მიწის სამუშაოებისთვის (2 ნახაზი)



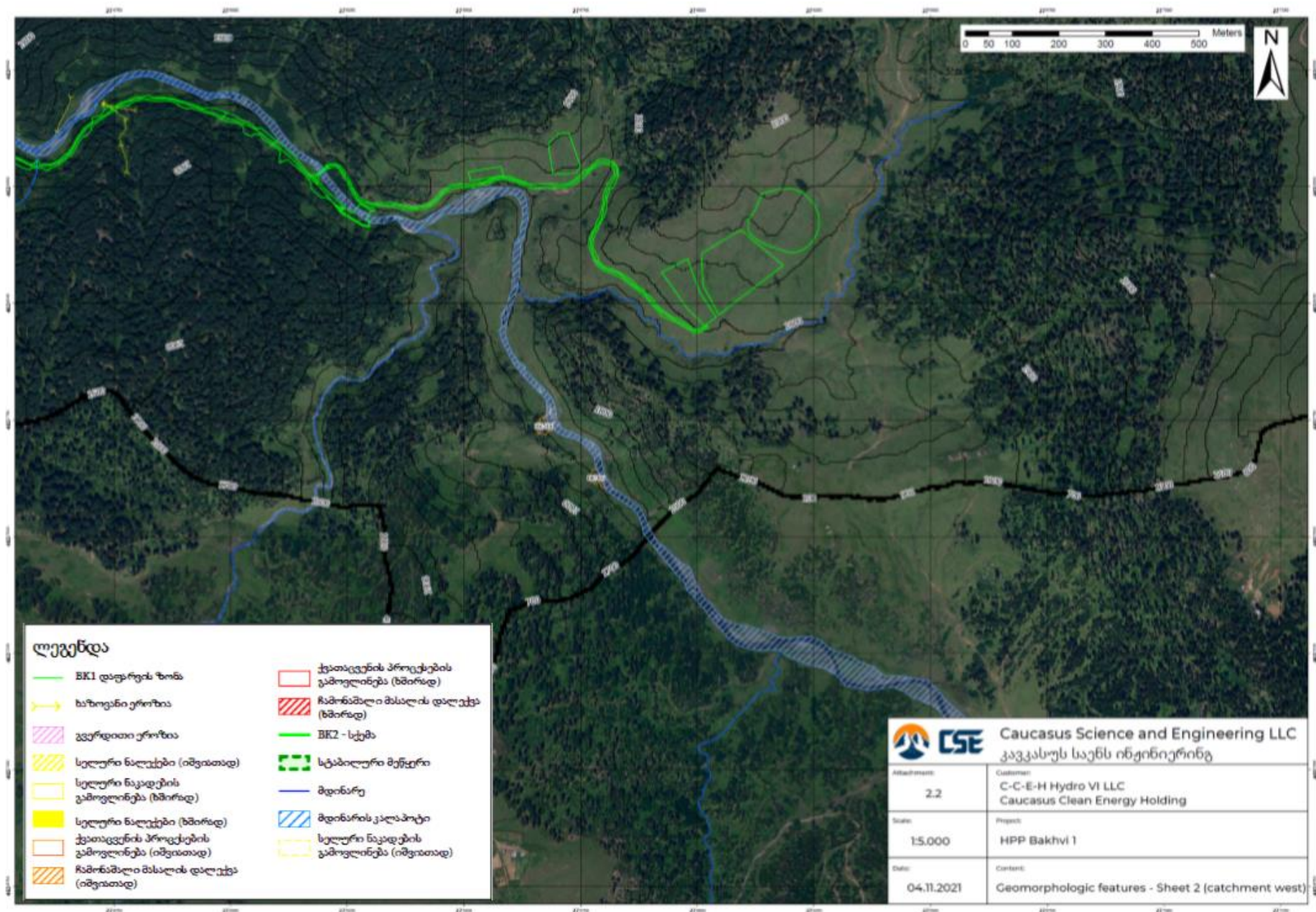




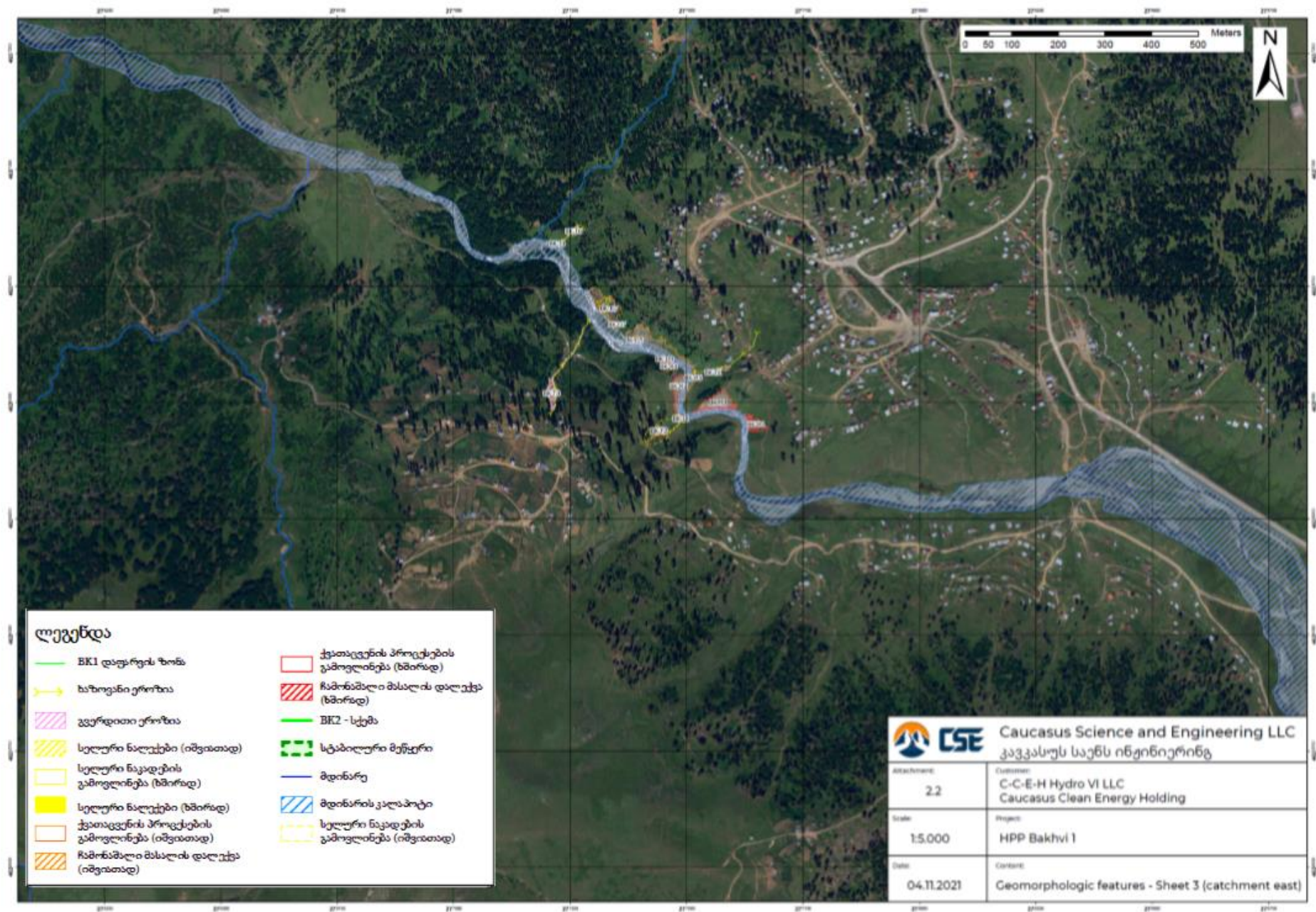
# გეომორფოლოგიური რუკა (3 ნახაზი)





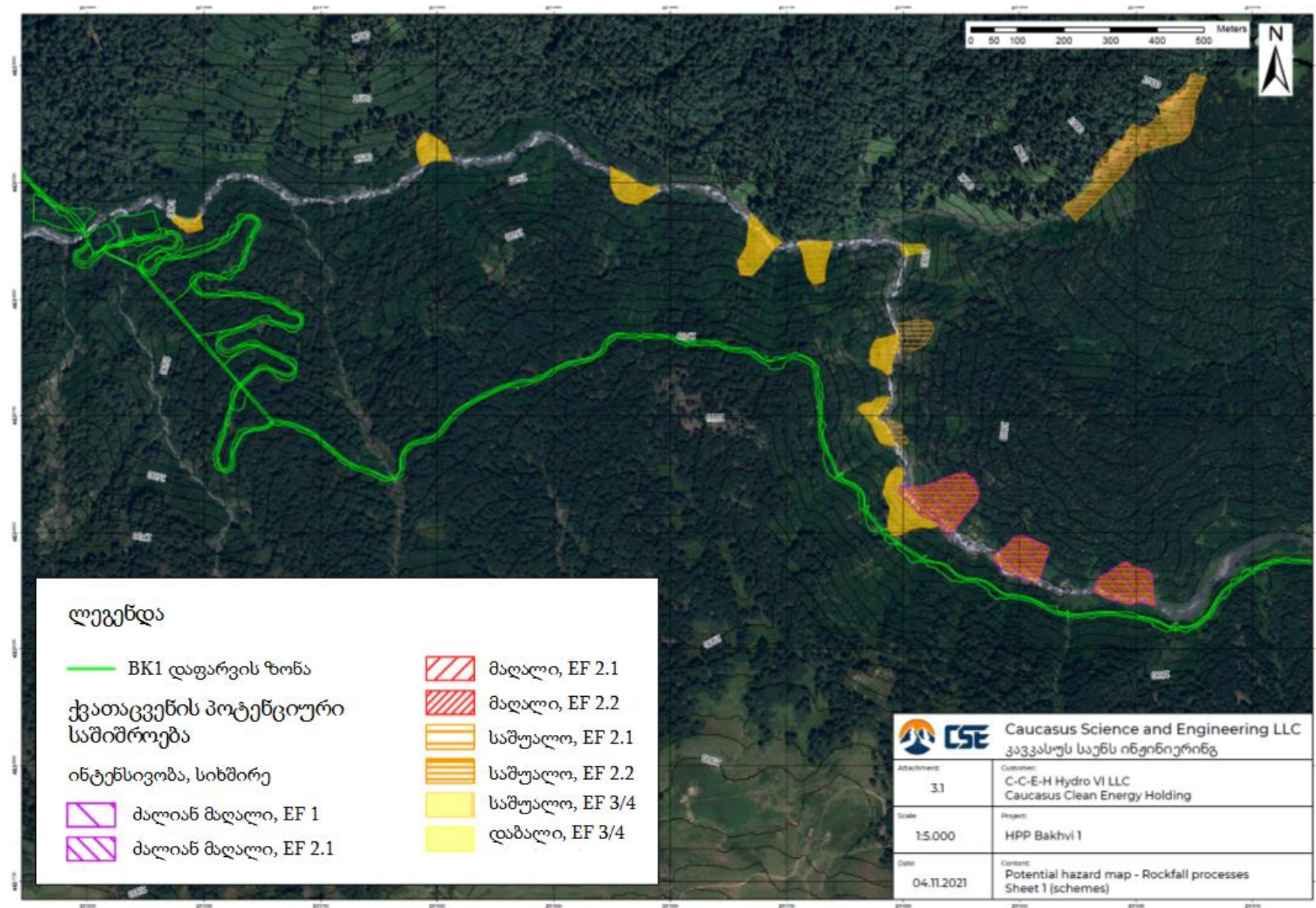




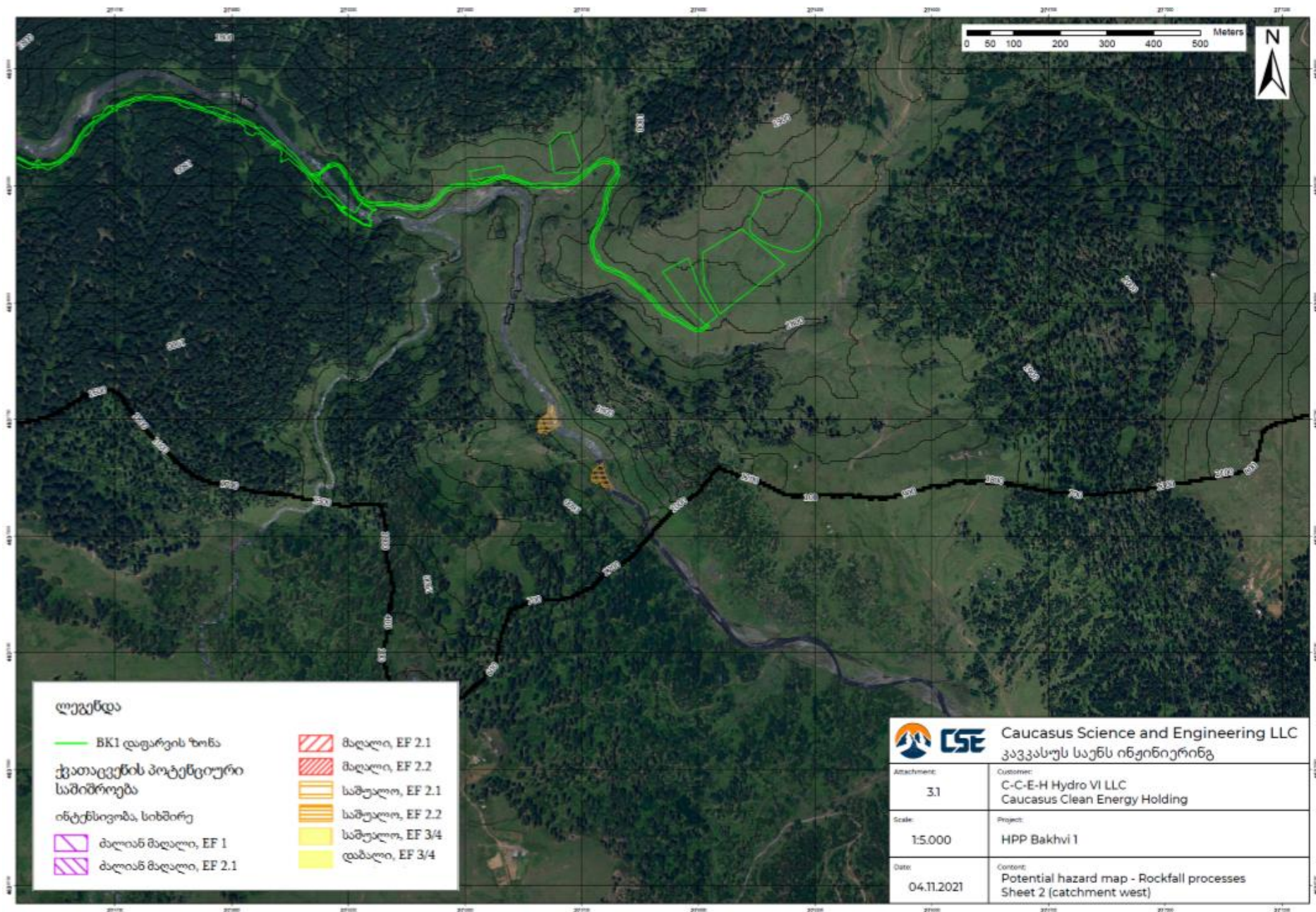




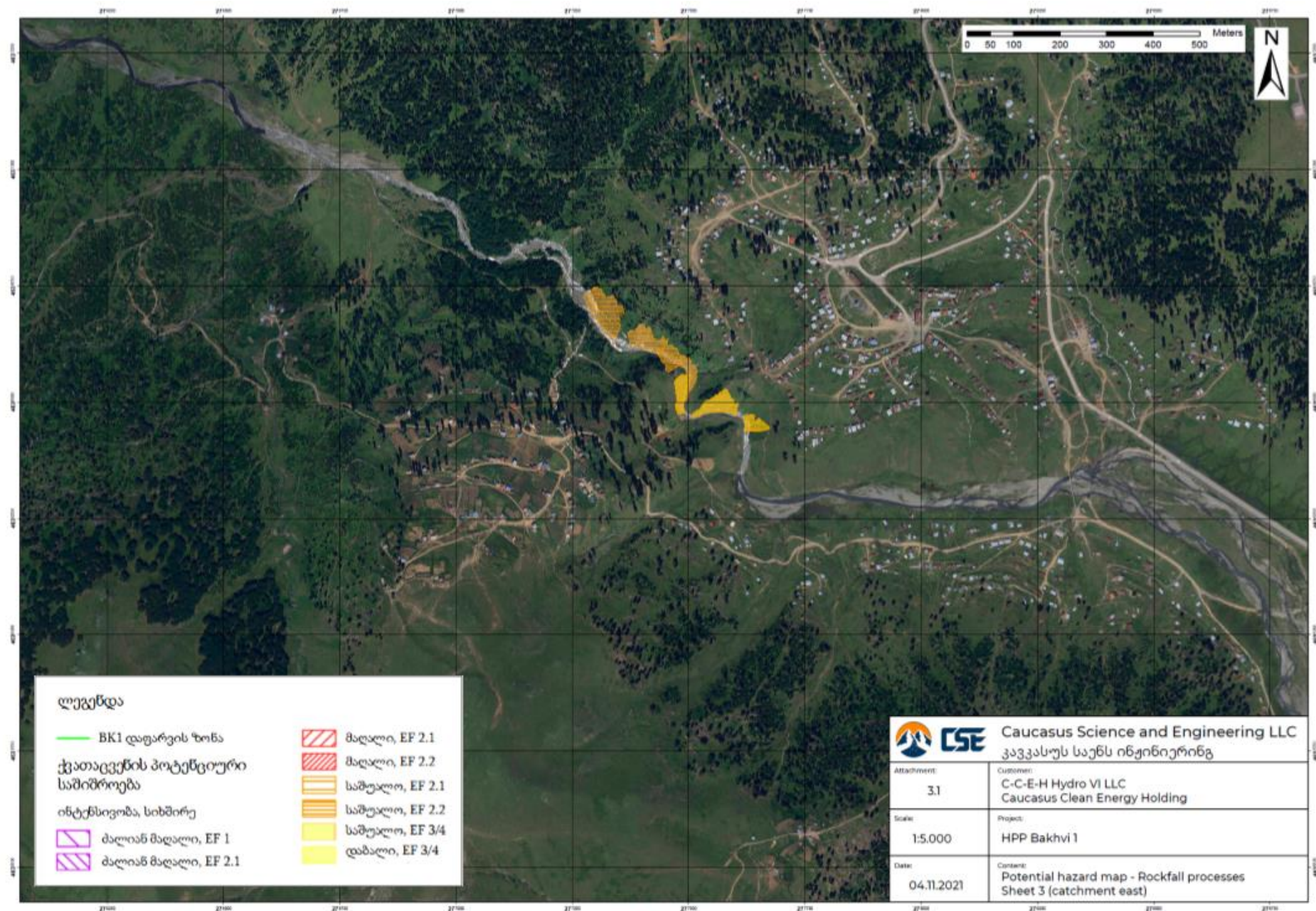
პოტენციური საშიშროების რუკა - ქვათაცვენა (3 ნახაზი)





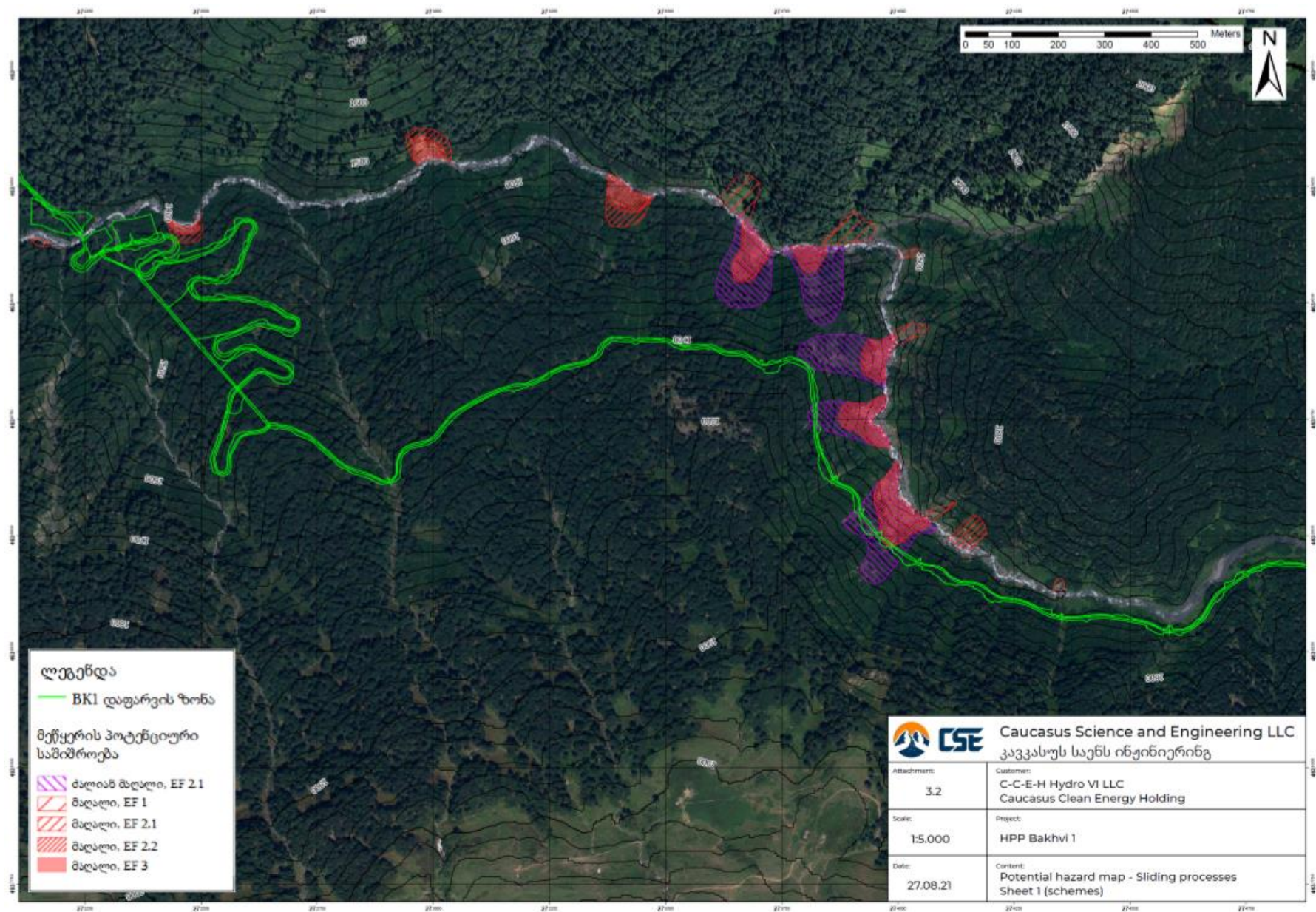




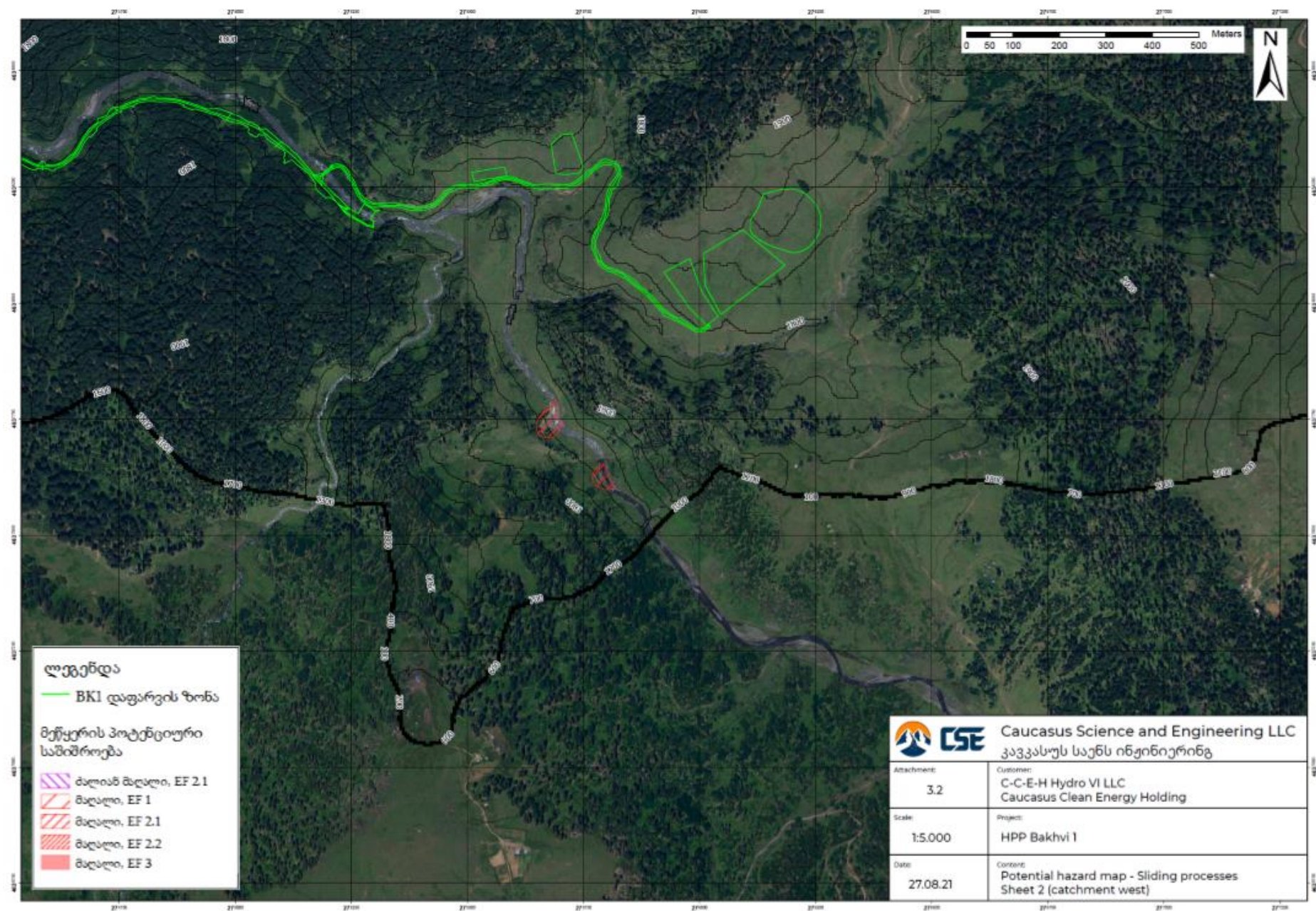




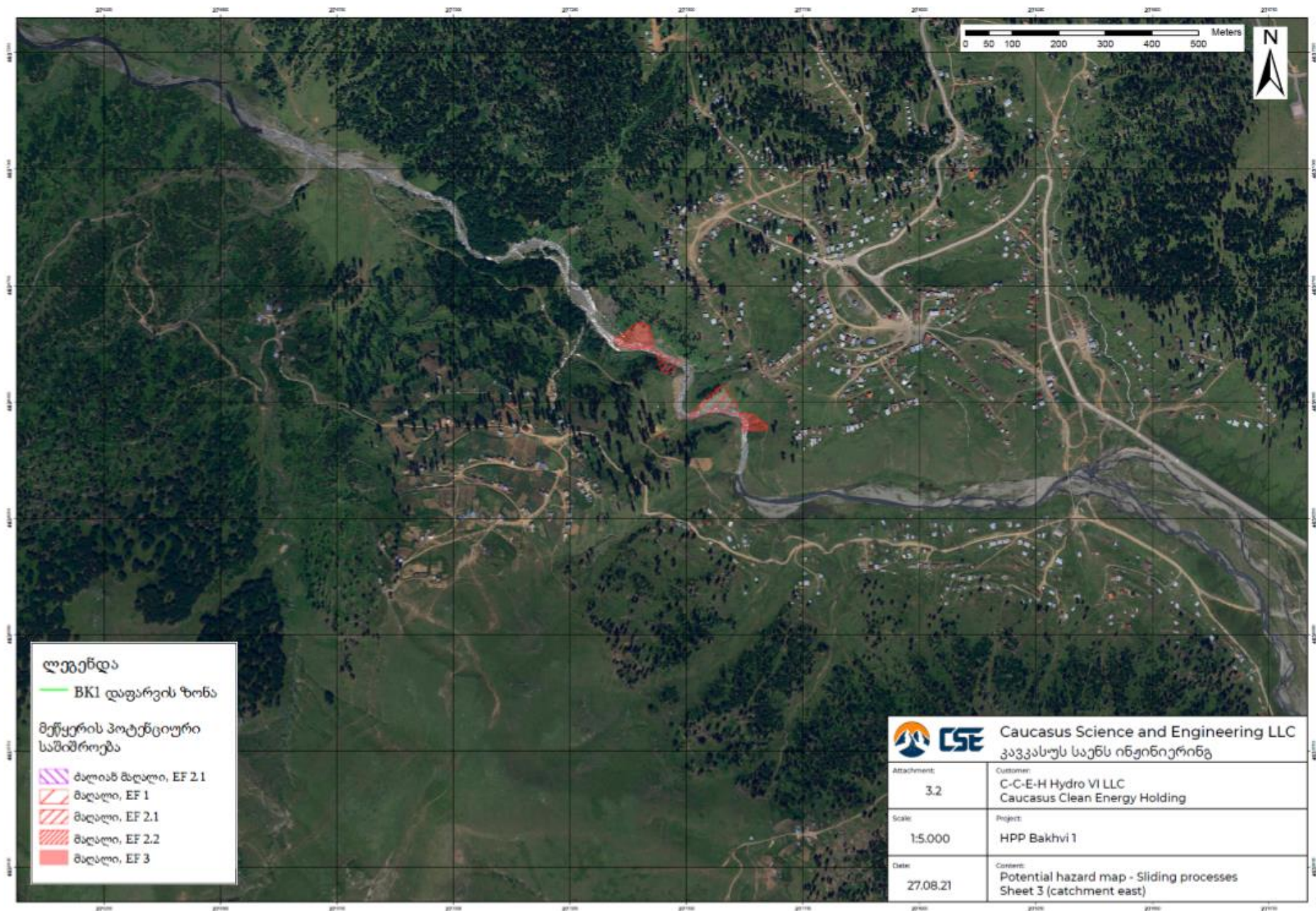
## პოტენციური საშიშროების რუკა - მეწყერი (3 ნახაზი)





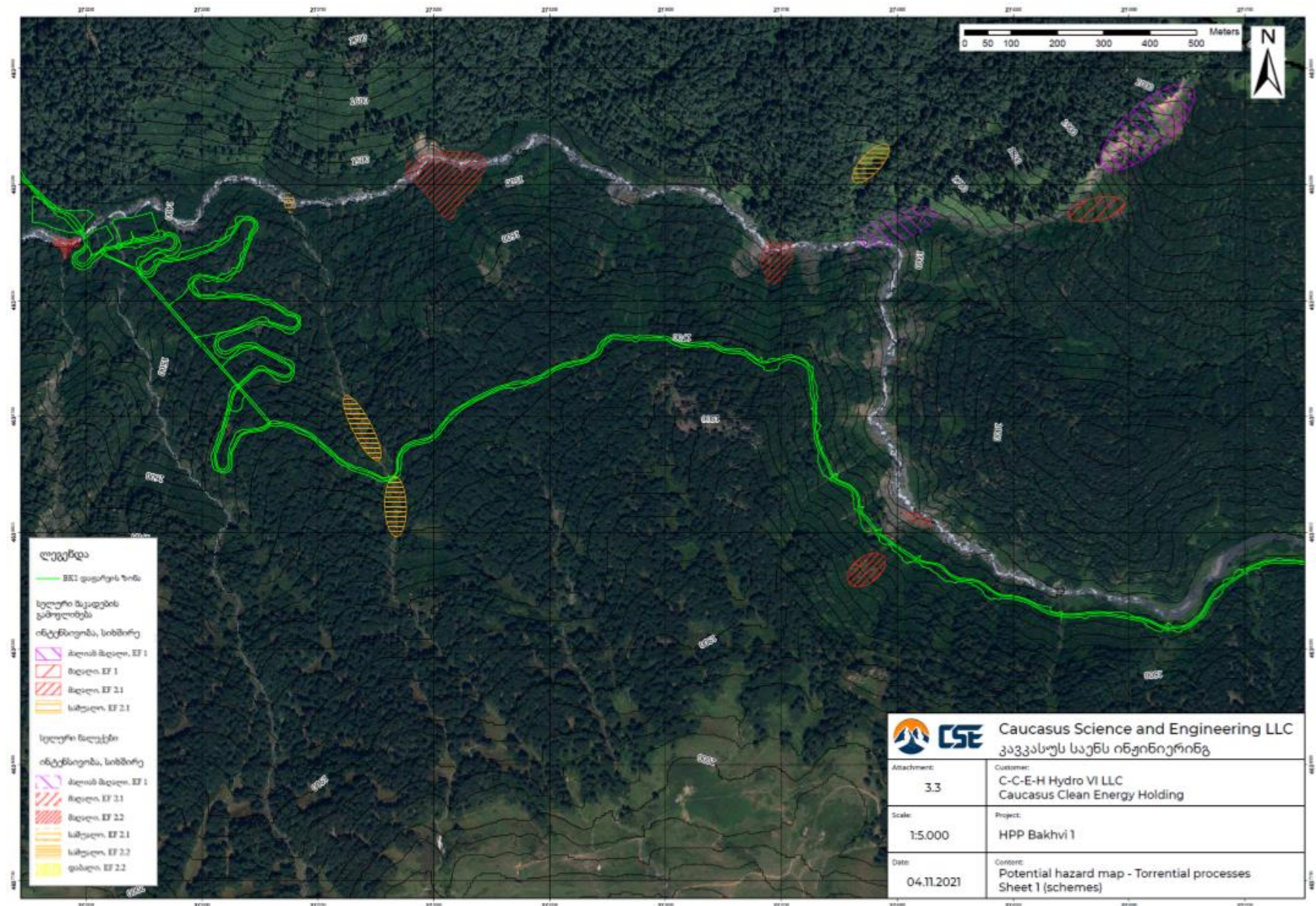




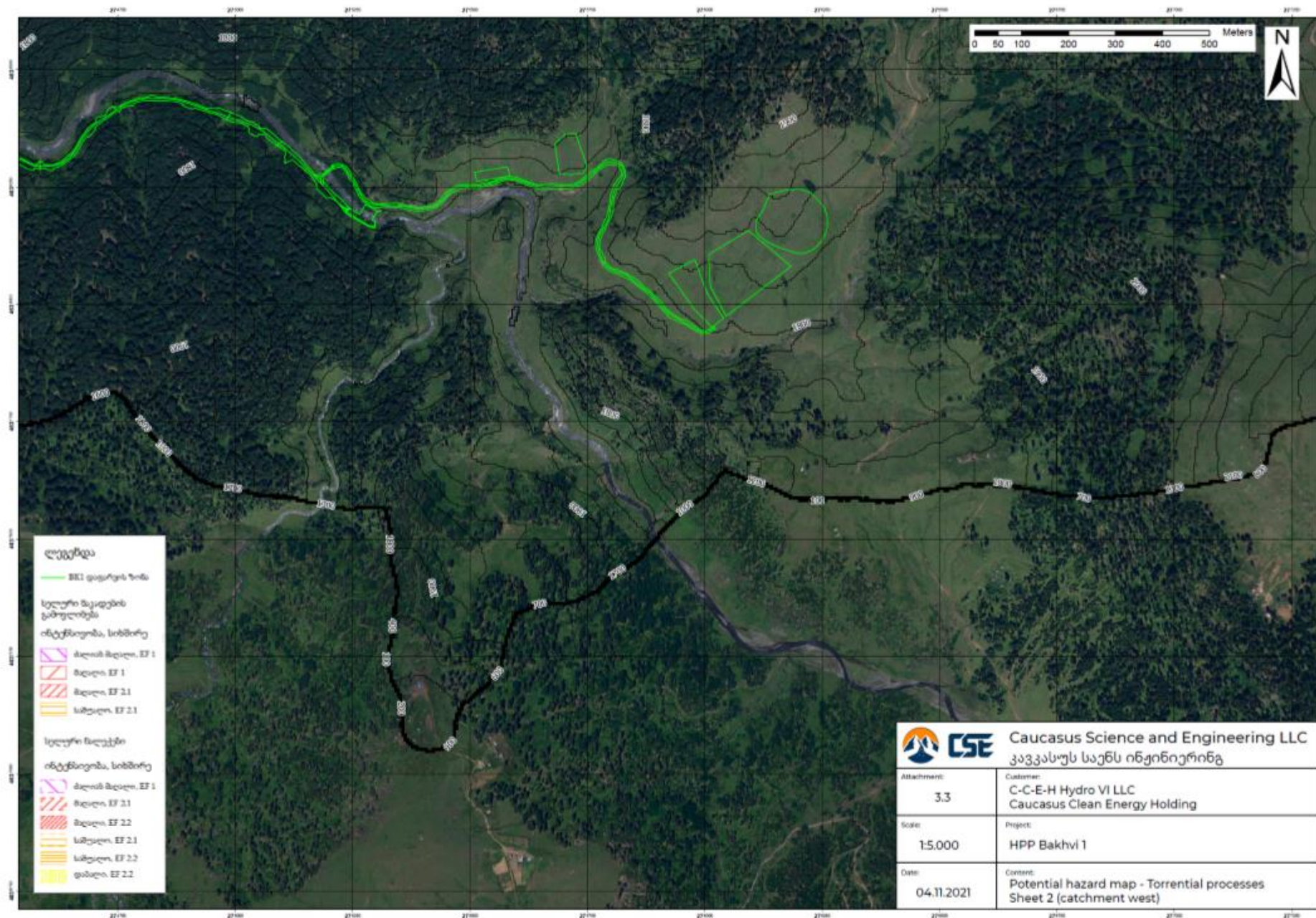




პოტენციური საშიშროების რუკა - სელური პროცესები (3 ნახაზი)







**Caucasus Science and Engineering LLC**  
კავკასიუს საენს ინჟინერიზმ

Attachment:	3.3	Customer:	C-C-E-H Hydro VI LLC Caucasus Clean Energy Holding
Scale:	1:5.000	Project:	HPP Bakhvi 1
Date:	04.11.2021	Content:	Potential hazard map - Torrential processes Sheet 2 (catchment west)



